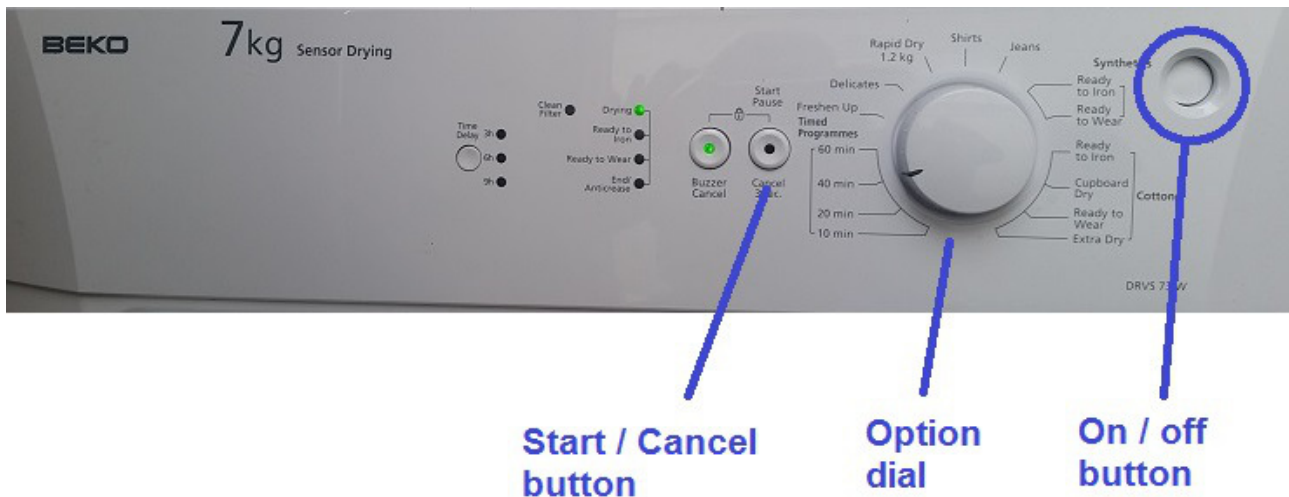


# Beko 7kg tumble dryer usage

The tumble dryer is located in the plastic shed, outside the back door.



## Quick help instructions

1. Click the On / Off button
2. Turn "Option Dial" to 20 minutes
3. Click the Start button

To Open main door, pull the handle on the left hand side

Note the Start button becomes the Cancel button if required

For best use, select the appropriate option on the Option dial